

BYW Series Surge Protective Device



BYW-F/75C

BYW-N/50C

BYW-SL16/50A

Introduction

BYW series is suitable for satellite TV high frequency, satellite signal receiver, micro wave station, mobile communication station system. To protect equipments from damage when meet inductive lightning impulse voltage.

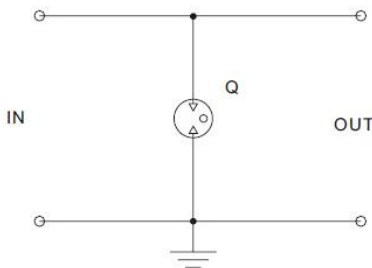
Installation and application

- Installed at boundaries LP0B and LPZ1
- Used in the system such as the airport's navigating station, (NDB) long wave communication station, small power short wave communication station, BP paging transmitter, closed-circuit TV net, VSA satellite TV, security satellite accepting station, microwave communication receiving and dispatch station, MMDS communication and GPS global position system.

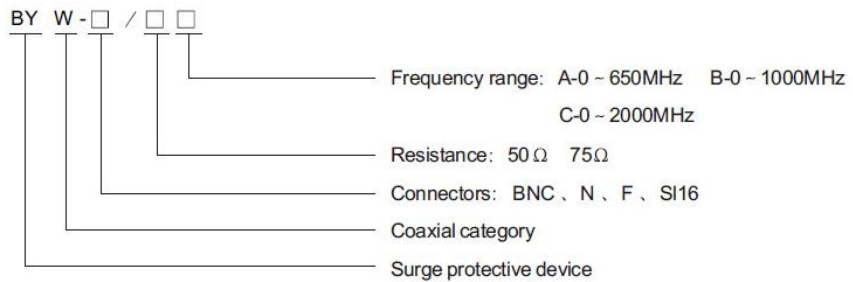
Features

- Large let-through current and can be repeated using after lightning.
- Small VSWR and little insertion loss.
- Convenient installation, standard connectors

Electric principle



Denominated indication



Performance parameters

Type	BYW-BNC/75C	BYW-BNC/50C	BYW-N/50C	BYW-N/50B	BYW-F/75C	BYW-SL16/50A
Max. continuous operating voltage U _c	DC68V/AC130V/AC280V					
Nominal discharge current I _n	10kA(8/20 μs)					
Power(W)	<300W					
Connectors:	BNC/75	BNC/50	N(L16)	N(L16)	F(FL10)	UHF(SL16)
Residual voltage(1Kv/ μs)	<600V					
Frequency width(MHz)	0-2000	0-2000	0-2000	0-1000	0-2000	0-650
VSWR	≤1.2					
Insertion loss	≤0.1dB					
Resistance	75Ω		50Ω		75Ω	50Ω
Remark	1. shell grounding 2. connectors can be designed as K-J J-J and K-K					

Dimension diagram

