

ATR05 Series

Features

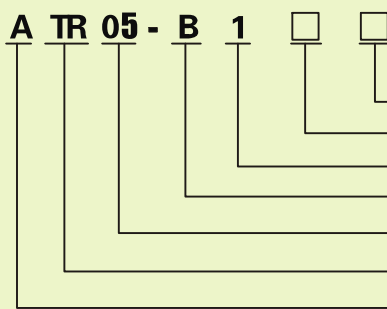
- High-performance CPU chips
- variety of operating modes
- various delay specifications contact
- double shows at the same time note time value and set value displays
- variety of installation methods, with a variety of outlets to choose from
- Dimensions: 48 × 48 × 83 (mm)



► Technical parameters

Type	ATR05-B1	ATR05-B2	ATR05-B3	ATR05-B4
Contact form	Convert-delay 1, Reset (clear)	Convert-delay 2, Reset (clear)	1-delay conversion, with instantaneous contact, Reset (clear)	2-delay conversion, with instantaneous contact, Reset (clear)
Operating voltage	12V、24V、36V、48V、110V、220V、380V、Wide voltage K: 85~264VAC			
Delay range	0.01S~99.99S、1M~99H99M、1S~99M99S			
Forms of work	Are free to set the timing (U), countdown (D) mode.			
Error	Action time to repeat the error $\pm 0.05\% \pm 50\text{ms}$, voltage error $\pm 0.05\% \pm 50\text{ms}$ (relative to the set ratio)			
Voltage range	85%~110% Rated voltage (DC12V为90%~110%)			
Mechanical life	1×10^6 OPS (5A AC250V COS ϕ =1, Switching frequency 1800 times / hour)			
Electrical life	1×10^5 OPS (No load, switching frequency 1800 times / hour)			
Power	$2W \leq 5VA$			
Timing Resolution	10ms			
Temperature&Humidity	$0 \sim 50^\circ\text{C} \leq 95\%$ (Non-condensing)			
Maximum output current	3A 250VAC (Resistive load)			

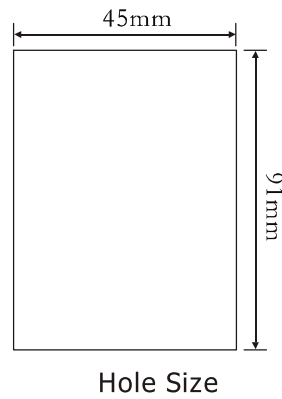
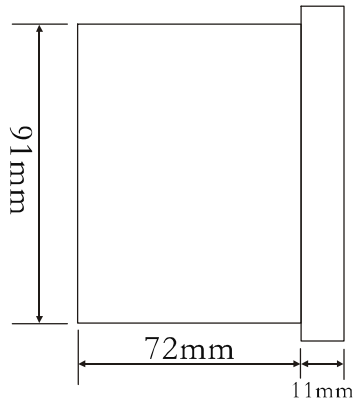
► Model description



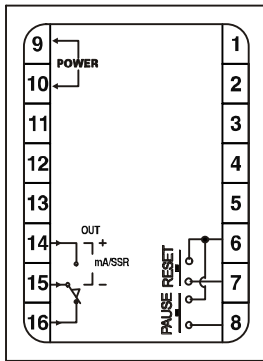
Operating voltage
Output mode
Forms of work
More time
Design Code
Time Relay
AIKS

Note:
Output mode:
space (no representation):
default setting for the relay output
(S: solid-state relay output, DR: that 0-12VDC output
The two kinds of output mode must be specified when ordering)

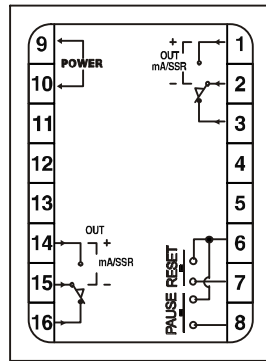
► Layout, mounting dimensions unit: mm



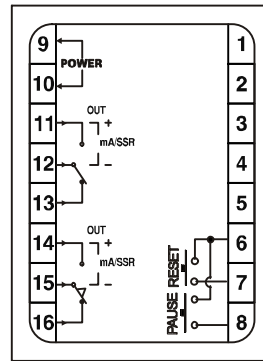
► Wiring diagram



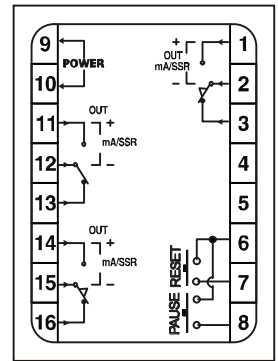
ATR05-B1



ATR05-B2



ATR05-B3



ATR05-B4

► Wiring diagram shows

