



- Applicable to the sing-phase, three-phase smart meters of 15(60)A、20(80)A and other electric power equipments
- Small in dimension, easy to install, sealed type
- Accessories can be customized as requirement
- Dimensions: 40×31×21(mm)

### Contact parameter

Contact form	1B	
Contact resistance (1A 6VDC)	Max.1.0mΩ	
Contact material	Silver alloy	
Contact rating (resistive load)	100A 250VAC	
Max. Switching Voltage	250VAC	
Max. Switching Current	100A	
Max. Switching Power	25000VA	
Life	Mechanical life	5×10 <sup>5</sup> OPS
	Electrical life	1×10 <sup>4</sup> OPS

### Performance parameter

Release Time		30ms Max
Operate Time		30ms Max
Dielectric strength	coil&contact	4000VAC 50/60Hz(1Min)
	between open contacts	1500VAC 50/60Hz(1Min)
Insulation resistance		500MΩ Min.(500VDC)
Ambient temperature		-40℃~+70℃
Relative humidity		45%-90% RH
Vibration		10-55Hz, 1.5mm
Impulsion		98m/s <sup>2</sup>
Weight(without accessory)		65g

### Ordering information

ALR06/100	100A	1B	12VDC	S	XX
Type	Contact current	Contact form	Coil voltage	Coil type	connect accessories
ALR06/100	100A	1B:1pole normally closed	6, 9 12, 24V	S:single coil D:double coil	as requirement

### Typical application

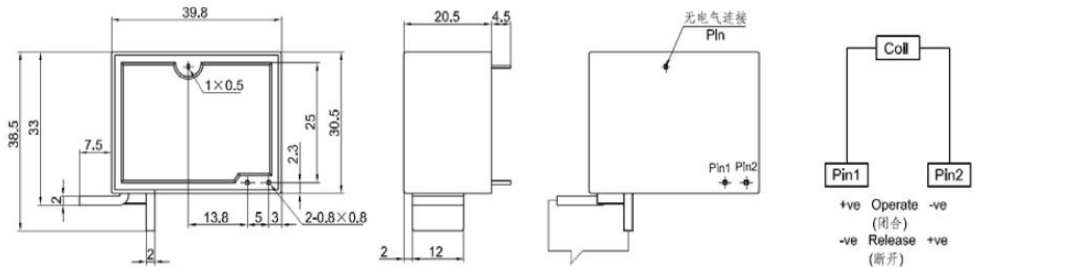
- intelligent electric meter
- electric remote control
- compound switch
- leakage protector

### Coil parameter(20°C)

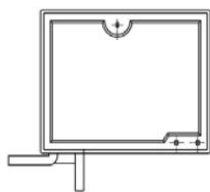
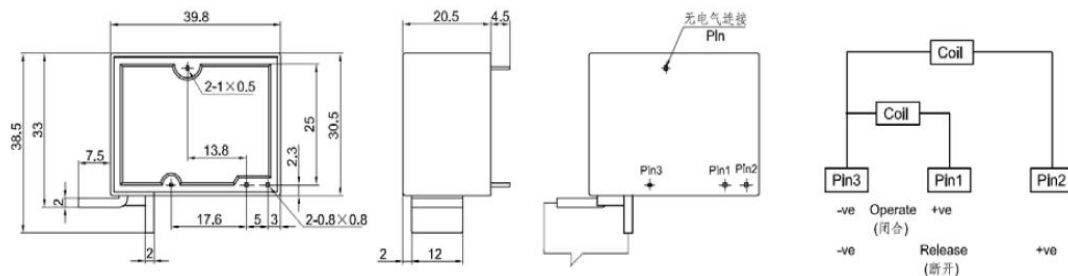
coil code	rated coil (VDC)	Coil resistance (Ω)+10%		Coil power (W)		Release voltage (VDC)	operate voltage (VDC)	over voltage (VDC)	pluse width (ms)
		single coil	double coil	single coil	double coil				
06	6VDC	18	9/9	2W	4W	≤80%	≤80%	≤120%	≥60ms
09	9VDC	40.5	20/20						
12	12VDC	72	36/36						
24	24VDC	288	144/144						

### Dimension 、 wiring diagram(unit:mm)

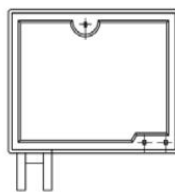
单线圈 Single Coil



双线圈 Double Coil



Type A



Type B